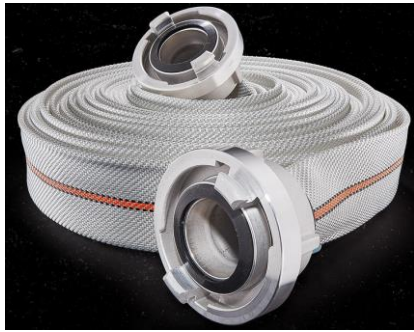


Fire hose: GH TITAN 3F

hose according to DIN 14811



Applications

- Fire brigade
- Industry
- Shipping
- Military
- Disaster relief
- Construction
- Agriculture

Features

Tough, very flat lying and fully in accordance with the relevant standards, it is perfectly designed to meet the requirements of a hose carrying basket.

- Very lightweight and highly flexible (also at extremely low temperatures)
- Small coil diameter
- Excellent resistance to ageing and ozone
- Lining extremely resistant to seawater and a wide range of chemicals (see resistance table)

Construction

- High-tenacity polyester yarn, circular woven in twill weave
- Exclusively spun-dyed polyester yarn is used for coloured hoses to ensure colour fastness
- 3-ply warp threads, heavy duty construction for better abrasion resistance and pressure parameters
- High-grade, smooth EPDM rubber lining with excellent resistance to foaming agents and a wide range of chemicals. Excellent resistance to seawater, chemicals, UV radiation and ozone (much better than e.g. SBR)

Pressures

Working pressure:

Specifications apply only to the hose (medium water, 20°C). The potential working pressure may be lower than specified above for hose lines with couplings due to the nominal pressure of the couplings or the type of assembly.

Maximum working pressure:

Approval can only be given by the manufacturer upon clarification of the exact area of application.

Standard length

Up to 60 m Other lengths available on request

Standard color

TITAN 3F – white

TITAN 3F NEON – neon yellow

TITAN 3F RED – red

Temperature

–40°C to +80°C (specifications apply to water)

Individual solutions

Customised inkjet marking

Bore size in inch	Weight in g/m	Wall thickness in mm	Working pressure in bar / PSI	Bursting pressure in bar / PSI	DIN level	DIN number	Approvals
Titan 3F							
1	150	1,8	16 / 230	60 / 870		ZPC 10083	DIN 14811, Lloyds Register
1 1/2	225	2,0	16 / 230	60 / 870	L2	ZPC 10045	DIN 14811, Lloyds Register
1 4/7	245	2,0	16 / 230	60 / 870			
1 2/3	255	2,0	16 / 230	60 / 870	L1	ZPC 10108	DIN 14811, Lloyds Register
1 3/4	275	2,0	16 / 230	60 / 870	L2	ZPC 10123	DIN 14811
2	300	2,0	16 / 230	60 / 870	L1	ZPC 10047	DIN 14811, Lloyds Register
2 1/6	310	2,0	16 / 230	60 / 870			
2 1/2	420	2,1	16 / 230	60 / 870	L3	ZPC 10109	DIN 14811, Lloyds Register
2 3/4	465	2,1	16 / 230	60 / 870	L3	ZPC 10166	DIN 14811
3	500	2,1	16 / 230	60 / 870	L2	ZPC 10086	DIN 14811, Lloyds Register
4 1/3	770	2,2	12 / 175	36 / 520		ZPC 10126	DIN 14811
6	1100	2,2	12 / 175	36 / 520			
Titan 3F Neon							
1	150	1,8	16 / 230	60 / 870			
1 4/7	245	2,0	16 / 230	60 / 870			
1 2/3	255	2,0	16 / 230	60 / 870	L1	ZPC 10085-2	DIN 14811
2	300	2,0	16 / 230	60 / 870	L1	ZPC 10047-2	DIN 14811
2 1/6	310	2,0	16 / 230	60 / 870			
3	500	2,1	16 / 230	60 / 870	L2	ZPC 10086-2	DIN 14811
Titan 3F Rot							
1 2/3	265	2,0	16 / 230	60 / 870	L2	ZPC 10085-1	DIN 14811
2	320	2,0	16 / 230	60 / 870	L2	ZPC 10047-1	DIN 14811
2 1/6	340	2,0	16 / 230	60 / 870			
3	520	2,1	16 / 230	60 / 870	L3	ZPC 10086-1	DIN 14811